



Next to

It can often be easier to describe a recognisable landmark that the destination is next to, rather than give detailed directions from the place you are standing.

"Excuse me, can you tell me how to get to the library?"

"Sure. It's next to the largest church in the city. Just walk towards that large church spire, and the library is next to that."

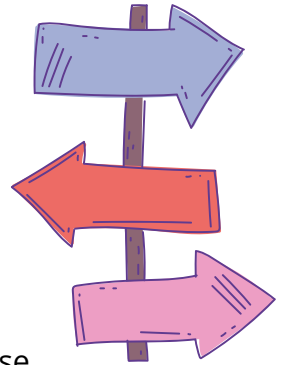


Opposite/on the opposite side of

If someone asks you for directions to a place that is across the street from a well-known landmark, you can say that it is opposite that landmark. You might say that something is on the opposite side of the street to a landmark.

"I'm sorry to bother you, but do you know where the nearest bank or ATM is?"

"Yes, it's on the high street, opposite the bookshop. It's on the opposite side of the street to the supermarket."



On the corner of

The point at which two streets intersect, or cross each other, is called a corner. To direct someone to a building which is located on a corner, you can say that the building is on the corner of those two streets.

"Hello. Could you tell me where the nearest post box is? I need to post a letter."

"No problem. It's on the corner of Main Street and Market Street."



Carry on/straight on

If someone is heading in the correct direction and you want to tell them to keep travelling in the same direction, you can tell them to carry on. In British English, we sometimes say straight on in this situation.

"Hi there, I'm trying to find the train station. Is it near here?"

"Yes. You're on the right street, you just need to carry on for another mile. When you get to the roundabout, go straight on and you will see the entrance to the train station."



To the right/left of

When the target destination is located beside a noticeable landmark, we can say that it is to the right of or to the left of that landmark.

"Excuse me, is there a car park near here?"

"The nearest car park is in town. You will find it to the right of the main statue in the town square."



Think about your local town centre. Imagine a starting point (perhaps a central bus station or park), then give directions to the following places.

Your favourite restaurant

.....
.....
.....

A pharmacy

.....
.....
.....

A supermarket

.....
.....
.....

A nice place for coffee

.....
.....
.....
.....

